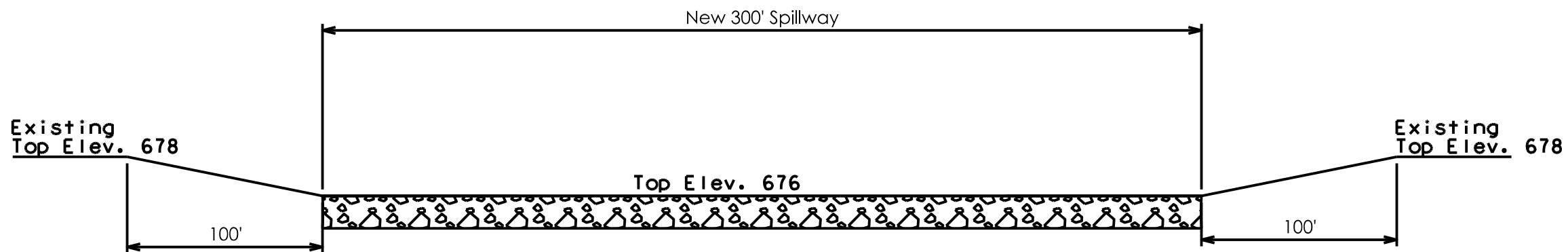
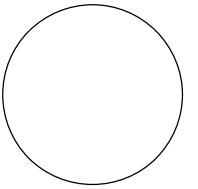


TYPICAL SPILLWAY SECTION
(Site 6)



TYPICAL SPILLWAY PROFILE
(Site 6)

CONSULTANT:



IOWA DEPARTMENT OF
NATURAL RESOURCES

ENGINEERING SERVICES - WALLACE BUILDING
502 E. 9TH ST., DES MOINES, IA 50319-0034



GENERAL DETAILS

FEMA PROJECTS FOR:

SUGEMA WILDLIFE UNIT

KEOKUK COUNTY

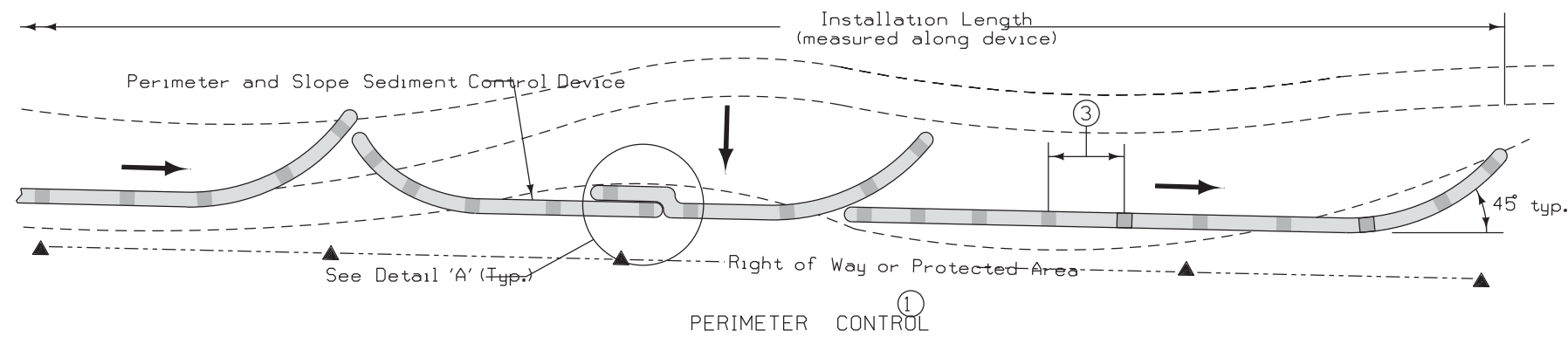
NO.	BY	REVISION

DRAWN BY: PROJECT NUMBER:
21-05-54-01

CHK'D BY: DATE:
XXX

SHEET No:

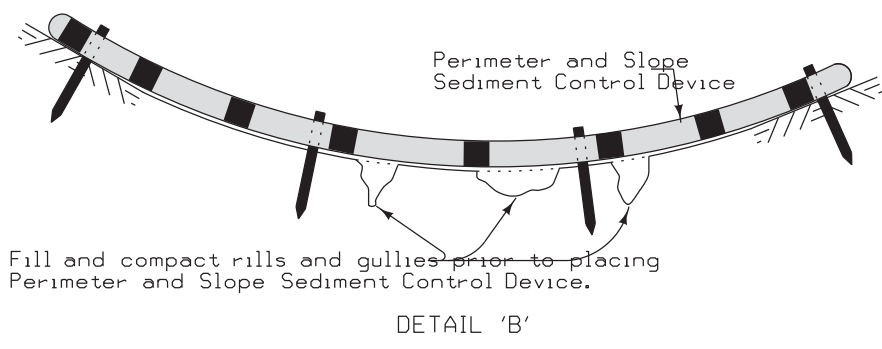
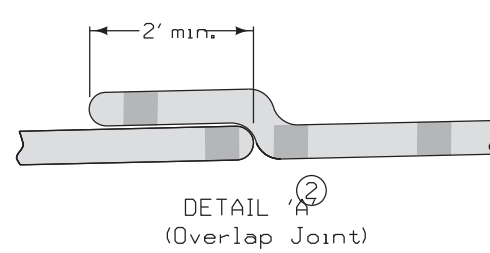
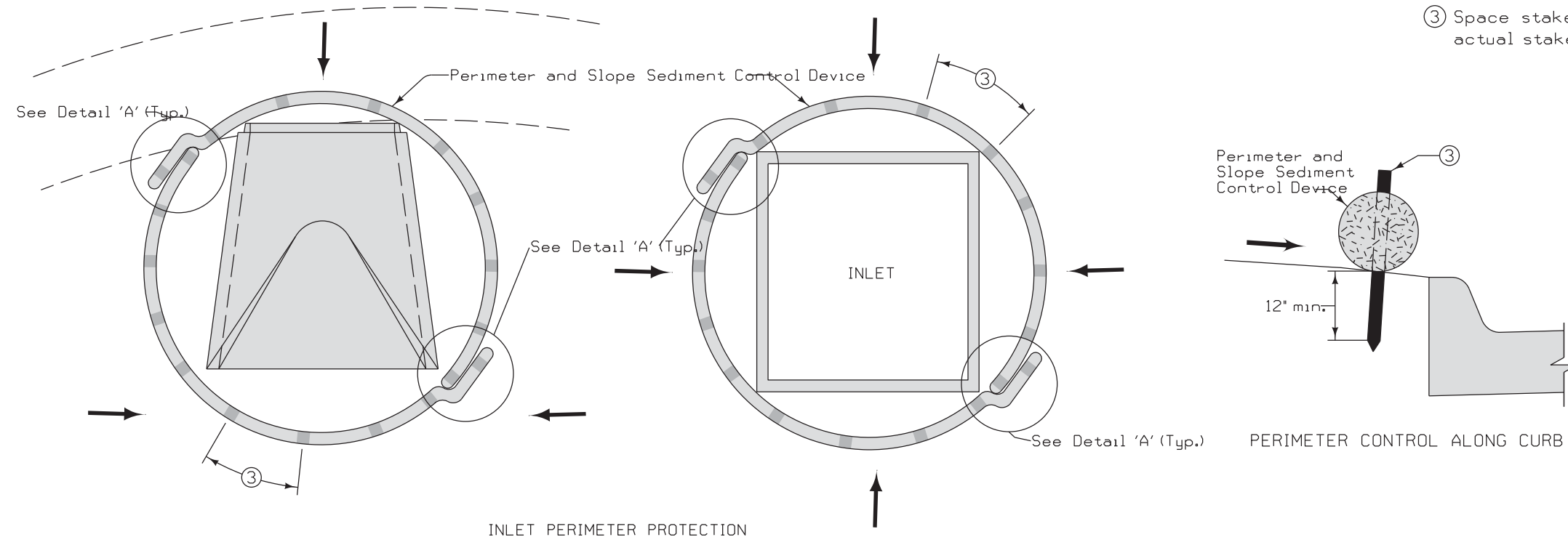
B.01



Not intended for use in perennial or intermittent streams.

Fill and compact rills and gullies (see Detail 'B') prior to placing Perimeter and Slope Sediment Control Device. Ensure ground surface is smooth in order to provide continuous contact with Perimeter and Slope Sediment Control Device. Minor ground shaping may be required. Filling and compacting rills and gullies, and minor ground shaping, is incidental to Perimeter and Slope Sediment Control Device.

- ① Overlap joints per Detail 'A'. Turn the lower 10 feet of each run up the slope to help contain runoff. When placed such that runoff is conveyed along the device, additional run-ups and/or means may be required to reduce erosion along the device. Run-ups will be included in the installation length.
- ② Extra material required to install overlaps will not be included in the installation length.
- ③ Space stakes at 4 foot maximum spacing. Use minimum actual stake $2\frac{1}{2} \times 2\frac{1}{2}$ wood stakes.



LEGEND	
- - -	Contour Lines
→	Flow
■	Wood Stake

Possible Contract Item:
Perimeter and Slope Sediment Control Device

Possible Tabulation:
100-19

NO.	BY	REVISION	
		DATE	REVISION
4		04-21-20	

STANDARD ROAD PLAN

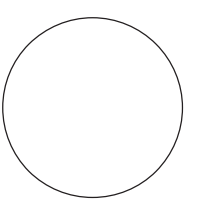
REVISIONS: Modified circle notes 3 and 5.

APPROVED BY DESIGN METHODS ENGINEER

PERIMETER AND SLOPE SEDIMENT CONTROL DEVICES

SHEET 1 of 3

CONSULTANT:



IOWA DEPARTMENT OF NATURAL RESOURCES
ENGINEERING SERVICES - WALLACE BUILDING
502 E. 9TH ST., DES MOINES, IA 50319-0034



GENERAL DETAILS

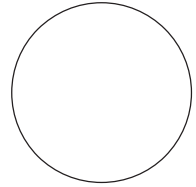
FEMA PROJECTS FOR:
SUGEMA WILDLIFE UNIT
KEOKUK COUNTY

PROJECT NUMBER:
21-05-54-01

DATE:
XXX

B.02

CONSULTANT:



IOWA DEPARTMENT OF NATURAL RESOURCES

ENGINEERING SERVICES - WALLACE BUILDING
502 E. 9TH ST., DES MOINES, IA 50319-0034



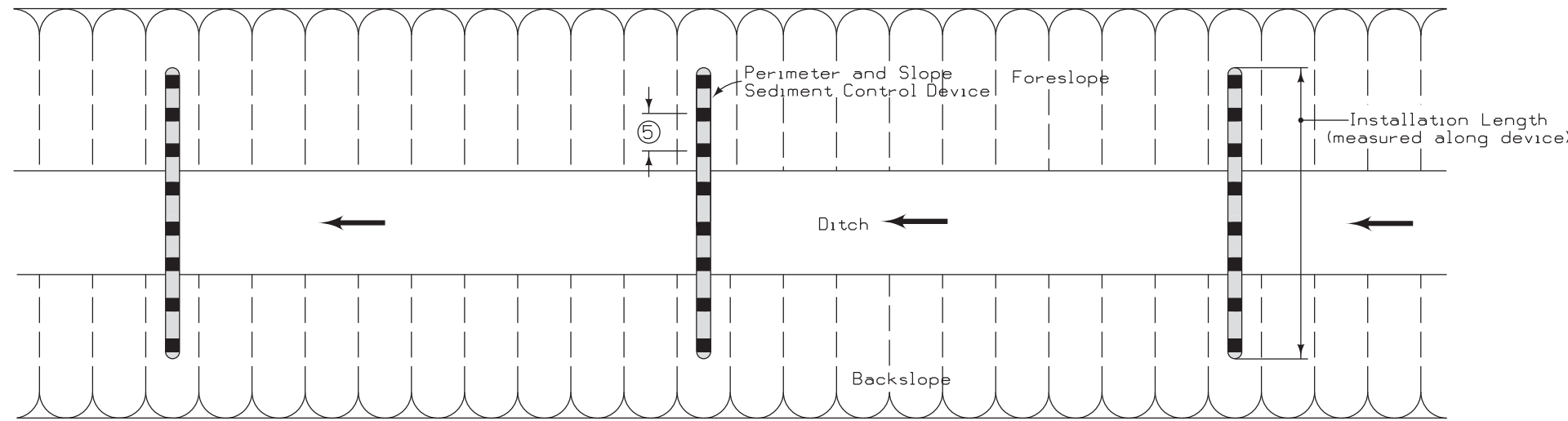
GENERAL DETAILS

FEMA PROJECTS FOR:

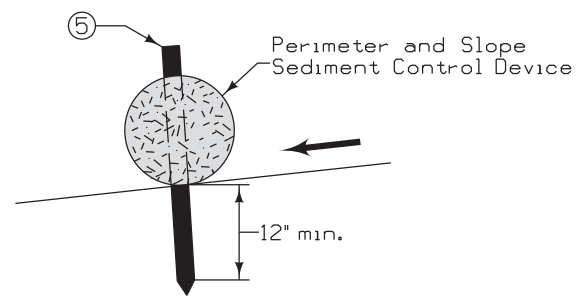
SUGEMA WILDLIFE UNIT

KEOKUK COUNTY

- ⑤ Space stakes at 2 foot maximum spacing. Use minimum actual stake size wood stakes.
- ⑥ Install Ditch Protection perpendicular to ditch. Over joints per Detail 'A'.



DITCH PROTECTION ⑥



INSTALLATION IN DITCH

LEGEND	
- - - -	Contour Lines
←	Flow
■	Wood Stake ⑤

STANDARD ROAD PLAN	REVISION	
	4	04-21-20
EC-204		
SHEET 3 of 3		
REVISIONS: Modified circle notes 3 and 5.		
APPROVED BY DESIGN METHODS ENGINEER		

PERIMETER AND SLOPE SEDIMENT CONTROL DEVICES

NO.	BY	REVISION

DRAWN BY: PROJECT NUMBER: 21-05-54-01

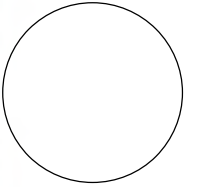
CHK'D BY: DATE: XXX

SHEET No:

B.04



CONSULTANT:



**IOWA DEPARTMENT OF
NATURAL RESOURCES**

ENGINEERING SERVICES - WALLACE BUILDING
502 E. 9TH ST., DES MOINES, IA 50319-0034



DIKE PLAN

FEMA PROJECTS FOR:

SUGEMA WILDLIFE UNIT

KEOKUK COUNTY

NO.	BY	REVISION

DRAWN BY: PROJECT NUMBER:
21-05-54-01

CHK'D BY: DATE:
XXX

SHEET NO:

D.02